

SECURE-LINK

This is primarily for commercial customers who need a more secure alarm-monitoring communications link that cannot be interrupted without the ALARMNZ center being instantly notified.



High Security Communications

VIDEO-LINK

A secure broadband connection between a customer's digital video camera server and the ALARMNZ web site. Customers can browse the <http://www.alarmnz.com> web site and watch 'live' video, review stored video snapshots and copy them to their own desktop computer.



Web Based Video

SPEAKOUT

A service where individuals can browse the <http://www.alarmnz.com> web site and post anonymous feedback about unsafe or undesirable activities by company staff or persons within a customers workplace.



Workplace Security

SERVICE-LINK

A fault detection service that informs customers of failure within their alarm system. This is a non-callout service primarily designed for notification of smoke alarm & system troubles.



Maintenance Service

AUTOMATION

This service notifies customers of equipment breakdowns via the ALARMNZ monitoring system. Types of activities often include freezers, air conditioning, manufacturing plant and general industrial control systems.



Alarm Switching Service

CONTACT

ALARM NEW ZEALAND Limited
10 West Terrace
Newton, Auckland.
PH: 09 303-0303 FAX: 09 302-0324
EMAIL: helpdesk@alarmnz.com
WEB: www.alarmnz.com

SERVICE NETWORK REPRESENTATIVE

ALARMNZ.COM



EMERGENCY 24/7

Home & Business

An alarm monitoring service suitable for small business and residential customers who require notification of alarm activations and emergency events. Designed for those customers who want continuous electronic surveillance of their property without additional service requirements.



LOCKDOWN

Checking Business Alarm Closures

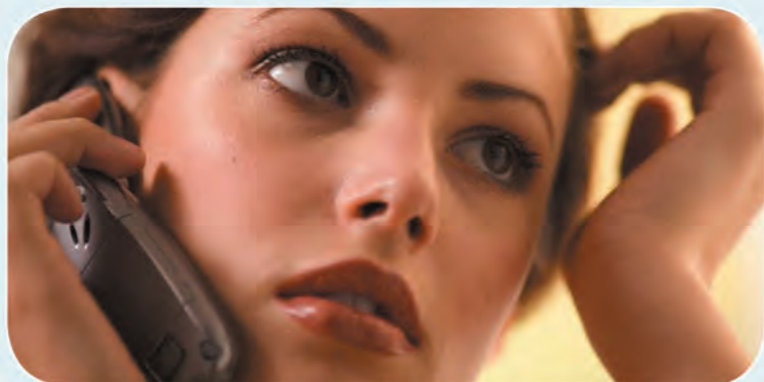
At the end of each business day a check is made to ensure the alarm system is armed on time and that no zones or areas have been accidentally disconnected from the monitoring system ensuring the site is fully secure after closure. A popular business alarm monitoring service that provides instant notification to either the customer and/or a security patrol company of all alarm activations as they occur.



MOBILE-LINK

Direct to Your Mobile

Customers can choose to have ALARMNZ monitoring messages sent to one or more mobile phones. This *text alert* or *email* service provides early notification of alarm activations, giving customers the opportunity to respond to their alarm system first.



CHALLENGE

After Hours Staff Access

A security monitoring service that informs the business owner when staff or contractors enter the company premises after hours. The ALARMNZ monitoring station records such entries and where required challenges employees or site visitors to confirm their ID. While most late entries are legitimate this extra check can help identify those staff that may be under duress or in trouble.



ALARM EXPLORER

Real-Time Event History

A powerful alarm network management tool with up to 12 months alarm activity online. Customers can browse the <http://www.alarmnz.com> web site, alter their callout contact details, load site photos, review event history and watch 'live' video at multiple locations.



FIRE-LINK

Fire Service

For building owners who require a secure automatic fire alarm monitoring service that is directly connected to the NZ Fire Brigade. This service immediately notifies the designated fire alarm maintenance representative of all critical fire alarm activations as they occur.



MEDIC-LINK

Medical & Ambulance Service

An emergency medical alarm monitoring service which forwards messages to the NZ Ambulance Service, family members and nominated health professionals. The ALARMNZ monitoring center can design an emergency response plan tailored to the customer's personal requirements.



POLICE CALL

Duress & Police Alarms

Principally for commercial customers who require a reliable duress alarm device that will attract a higher level of attention from the Police dispatch center. This service routes alarm transmissions directly to the Police service and designated call-out representatives simultaneously.

